

Date: January 14, 2016

Request for Placement on Board Agenda:

[] ACTION

[X] INFORMATION

AGENDA TOPIC: 2015 Adequate Yearly Progress Report

PRSENTER: Ellen Hamilton, Director of State & Federal Programs

Information:

Review of AYP for 2015: The Packet includes the following information:

- FAQs for 2015 Accountability
- 2015 Adequate Yearly Progress Report Information Guide
- APR County List of Schools Report
- APR For WUSD
- PI Status for WUSD
- APR List of Schools
 - Murdock
 - Willows Intermediate School
 - Willows High School

Findings:

The AYP Report used only the participation information from the 2015 Smarter Balanced Summative Assessments and California Alternate Assessment Field Test, not the assessment results. The results from the assessments will be displayed within the percent proficient but will not be used for AYP determinations. The target is 95 percent and the participation rates are calculated for English language arts/literacy (ELA) and mathematics. The target for attendance rate is 90 percent; The target for graduation rate is 90 percent; All schools and LEAs that received Title I, Part A funds during the 2014–15 school year and were identified as "In PI" on the 2014–15 PI Report will receive a 2015–16 PI Report based on their performance on the 2015 AYP.



Home / Testing & Accountability / Accountability / Accountability Progress Reporting (APR)

FAQs for 2015 Accountability

Frequently asked questions (FAQs) posed by schools, districts, and the public.

- [Accountability Progress Reporting](#)
 - [Adequate Yearly Progress](#)
 - [Program Improvement](#)
 - [Academic Performance Index](#)
-

Accountability Progress Reporting (APR)

1. What reports are contained in the 2015 APR?

The 2015 APR will include the:

- Adequate Yearly Progress (AYP) reports for all schools and local educational agencies (LEAs),
- Program Improvement (PI) reports for all Title I, Part A-funded schools and LEAs, and
- Cohort graduation rate reports for all schools and LEAs that had grade twelve enrollment or at least one graduate in the 2013–14 graduation cohort.

Back to Top

Adequate Yearly Progress (AYP)

2. I thought that AYP was not going to be calculated this year because we only have baseline results of the Smarter Balanced Summative Assessments. Is my school's AYP Report based on the first results from the Smarter Balanced Summative Assessments?

No. The AYP Report used only the participation information from the 2015 Smarter Balanced Summative Assessments and California Alternate Assessment Field Test, not the assessment results. The results from the assessments will be displayed within the percent proficient but will not be used for AYP determinations. (See question 4 [below] for further details on the display of the percent proficient data.)

3. What AYP indicators are schools and LEAs responsible for meeting for the 2015 AYP?

- ▣ **Participation Rate:** The target is 95 percent and the participation rates are calculated for English language arts/literacy (ELA) and mathematics. The data used to calculate the participation rates was based on the percentage of students enrolled during the time of testing and participated in either the Smarter Balanced Summative Assessments or the California Alternate Assessment Field Test. This indicator is required for all schools and LEAs. (See question 5 [below] for further details on the use of the California Alternate Assessment Field Test, and questions 6 and 7 [below] for further details on the calculation of the participation rate.)
- ▣ **Attendance Rate:** The target is 90 percent; this indicator is only applicable for schools or LEAs that enrolled 30 or more students in Transitional Kindergarten through grade eight (TK–8) on Fall Census Day. The attendance data used to calculate the rate are based on data submitted to the California Department of Education (CDE) by LEAs or direct-funded charter schools. (See questions 8 and 9 [below] for further details on the attendance rate.)
- ▣ **Graduation Rate:** The target is 90 percent; this indicator is only applicable for schools or LEAs that have grade twelve enrollment or at least one graduate in the graduation cohort.
- ▣ **Percent Proficient:** Please note that the U.S. Department of Education (ED) granted California a one-year waiver that allows AYP determinations to exclude the percent proficient. As a result, schools and LEAs are not responsible for meeting the percent proficient target. (See question 4 [below] for further details on the percent proficient.)

4. I thought that California received a one-year waiver from the ED allowing percent proficient data to not be used. Why are percent proficient data on my district's AYP Report?

As noted earlier, California did receive a one-year waiver from the ED that allows AYP determinations to exclude the percent proficient. However, the ED is requiring California to **display** the percent proficient data on the AYP Report.

5. Are results from the California Alternate Assessment Field Test being incorporated in the 2015 AYP Report?

The ED has required the California Alternate Assessment Field Test to be included in the calculation of the ELA and mathematics participation rates. Students who were enrolled during the testing window and participated in the field test were captured in both the numerator and denominator of the participation rate. (See questions 6 and 7 [below] for further details on the calculation of the participation rates.)

However, because the California Alternate Assessment Field Test did not yield any results, this assessment was not included in the calculation of the percent proficient.

6. How is the participation rate calculated?

The **denominator** includes all students who were enrolled during a school's testing window. The

numerator includes all enrolled students who participated in the Smarter Balanced Summative Assessments or the California Alternate Assessment Field Test.

To be counted as a "participant", a student must have at least logged on to both the computer adaptive test (CAT) and performance task (PT) for each content area activity.

See question 7 (below) regarding additional rules to calculating the participation rate.

7. I had students who transferred in or out during my school's testing window. Which of these students are included in my school's participation rate?

First, keep in mind that for AYP purposes, a school's testing window begins when the first student at the school completes a CAT or PT (in either content area) and ends on the last day of the academic year. As a result, some school's testing windows may span up to 12 weeks. Because some students may transfer in or out during the long testing window, grace periods were developed to hold schools harmless for not administering the assessments to these students. Depending upon the length of a school's testing window, one or two grace periods may be applied at the beginning and/or end of a testing window.

The general rules are as follows:

- A student who had not yet tested and transferred out during the **beginning** grace period is not included in a school's participation rate (i.e., the school is not held responsible for testing the student). The "beginning grace period" is one that is applied at the start of the testing window.
- A student who transferred in during the **ending** grace period is also not included in a school's participation rate (i.e., the school is not held responsible for testing the student). The "ending grace period" is one that is applied at the end of the testing window.

Specific information and examples of grace periods and when a transferring student is included or excluded from a school's participation rate are in the "Requirement 1: Participation Rate" section of the AYP Information Guide posted on the [CDE AYP Web page](#).

8. My school enrolls students from grades seven through twelve. I can understand the requirement to meet the graduation rate, but why am I seeing the attendance rate reported on my school's AYP Report?

All schools that met the following criteria are held accountable for meeting the attendance rate target:

- a. The school's entire enrollment was 100 or more on Fall Census Day in October 2014, and the enrollment in TK through grade 8 was 30 or more
- b. The school's entire enrollment was between 30 to 99 on Fall Census Day in October 2014, and the enrollment in TK through grade 8 was 30 or more, or the percent of TK through

grade 8 enrollment made up 50 percent or more of the school's enrollment

(See the information in question 9 [below] for further details regarding the attendance rate indicator.)

9. What data are the attendance rates based on, and what is the attendance rate target?

The attendance rates were calculated using the attendance data collected from LEAs and direct-funded charter schools. LEAs and direct-funded charter schools had two options for submitting attendance data to the CDE:

- **Option 1:** Submit the total number of days attended and enrolled for all students (for each school site) as of the second period (P-2), which is from July 1 through the last school month that ends on or before April 15, **or**
- **Option 2:** Submit P-2 average daily attendance (ADA) for each school site.

The attendance rate target is 90 percent as approved by the State Board of Education (SBE) at their September 2015 meeting.

10. Are the grades five, eight, and ten California Assessment of Student Performance and Progress (CAASPP) science results incorporated in the 2015 AYP reports?

No. As in prior reporting years, AYP is based only on the ELA and mathematics content areas. Science results have never been used for AYP.

Back to Top

Program Improvement (PI)

11. Will schools and LEAs identified for PI last year carry forward their PI status this year?

No. All schools and LEAs that received Title I, Part A funds during the 2014–15 school year and were identified as "In PI" on the 2014–15 PI Report will receive a 2015–16 PI Report based on their performance on the 2015 AYP.

12. My middle school did not receive an AYP Report last year and our PI Report last year stated that we were "Not in PI." However, our PI Report for this year indicates that my school has been newly identified as in Year 1 of PI. How is this possible when we did not receive an AYP Report last year?

Last year, elementary and middle schools did not receive AYP reports. Any of these schools that were Title I, Part A-funded in 2013–14 carried over their PI status in 2014–15.

For this year, the 2013 and 2015 AYP reports were used to determine the 2015–16 PI status and placement for schools that:

- ▣ Did not receive a 2014 AYP Report,
- ▣ Were not in PI in 2014–15, and
- ▣ Received Title I, Part A funds for 2012–13, 2013–14, and 2014–15

As a result, your school was newly identified as in Year 1 of PI because your school did not make AYP in the same subject area (ELA or mathematics) or on the same indicator (graduation rate) in 2013 and 2015.

13. The PI Report for my school stated that we advanced from Year 2 to Year 3 of PI. I thought that schools could not advance in PI based on performance on the 2015 Smarter Balanced Summative Assessments. Why did our school advance in PI?

The 2015 AYP Report was used to make PI determinations for any school that received Title I, Part A funds in 2014–15. If the school was in PI last year, the possible PI outcomes for 2015–16 are that the school will: (1) maintain or advance in PI placement year or (2) exit from PI at the end of 2014–15. All schools were responsible for meeting the participation rate in each content area, ELA and mathematics, on the 2015 AYP. In addition, the attendance rate criteria must be met by any school that enrolled 30 or more students in TK–8 on Fall Census Day. The graduation rate criteria must be met by any school with grade twelve enrollment or at least one graduate in the graduation cohort. Any Title I, Part A-funded school that was in PI in 2014–15 that missed any requirement on the 2015 AYP advanced in PI for 2015–16. (See question 8 [above] for the full attendance criteria.)

14. My LEA has been Title I, Part A-funded for the past three years. The LEA is a unified school district that did not receive an AYP Report in 2014, was not in PI last year, and failed to make AYP in the mathematics content area in both 2013 and 2015. Why is my LEA not in Year 1 of PI for 2015–16?

For an LEA to be first identified for PI, it must:

- ▣ Fail to make AYP for two reporting cycles in the same content area (ELA or mathematics) LEA-wide or for any numerically significant student group, and
- ▣ Fail to meet the AYP criteria for the same content area in each applicable grade span (elementary, middle, and/or high) for two reporting cycles, or fail to make AYP on the same indicator (graduation rate) LEA-wide or for any numerically significant student group for two reporting cycles.

If your LEA did not enter PI Year 1 for 2015–16, it must have met AYP in the mathematics content area in at least one grade span for 2013 or 2015.

Back to Top

Academic Performance Index (API)

15. Why is the 2015 Growth API Report not included as part of the 2015 APR?


California's education system went through landmark changes in 2014 with the implementation of the Local Control Funding Formula (LCFF), the transition to a new testing system, and the shift to develop a new state accountability system. Given these changes, at the March 2015 meeting, the SBE approved the State Superintendent of Public Instruction's (SSPI's) recommendation to not calculate the following API reports:

- 2014 Base API
- 2015 Growth API
- 2015 Base API

As a result of suspending the APIs, the SBE also approved the removal of the API as an additional indicator for all schools for AYP reporting purposes. (See question 3 [above] for the indicators required for the 2015 AYP.)

16. I had heard that California is developing a new state accountability system. What is the current status? Is there a place online that I can access so that I stay apprised of the latest information?

The CDE and the SBE are currently developing a new state accountability system and information has, and will continue to be, discussed at SBE meetings. Past and future agenda items on this topic can be accessed on the SBE [Current and Past Agendas Web page](#).

In addition, the SSPI has convened an Advisory Task Force on Accountability and Continuous Improvement. This Task Force is responsible for providing the SSPI with recommendations for a new California system of education accountability and continuous improvement. These recommendations will be presented to the SBE in spring 2016. Additional information is available on the [Accountability and Continuous Improvement Task Force Web site](#) .

17. I know that ranking data were not produced last year, but will ranking data ever be released again?

Effective July 1, 2013, California *Education Code* Section 52056(a) requiring API ranking of schools was repealed. As a result, beginning in 2014, statewide and similar schools ranks are longer produced.

The final statewide and similar schools ranks were produced based on the 2013 Growth API data and reported within the 2013 Growth API reports.

Back to Top

Questions: Academic Accountability Team | aau@cde.ca.gov | 916-319-0863

Last Reviewed: Tuesday, December 29, 2015

AYP Criteria

This section describes the details of AYP criteria for California. Schools and LEAs are required to meet or exceed the criteria annually in the following areas in order to make AYP:

- Requirement 1: Participation Rate
- Requirement 2: Attendance Rate as an Additional Indicator (if applicable)
- Requirement 3: Graduation Rate as an Additional Indicator (if applicable)

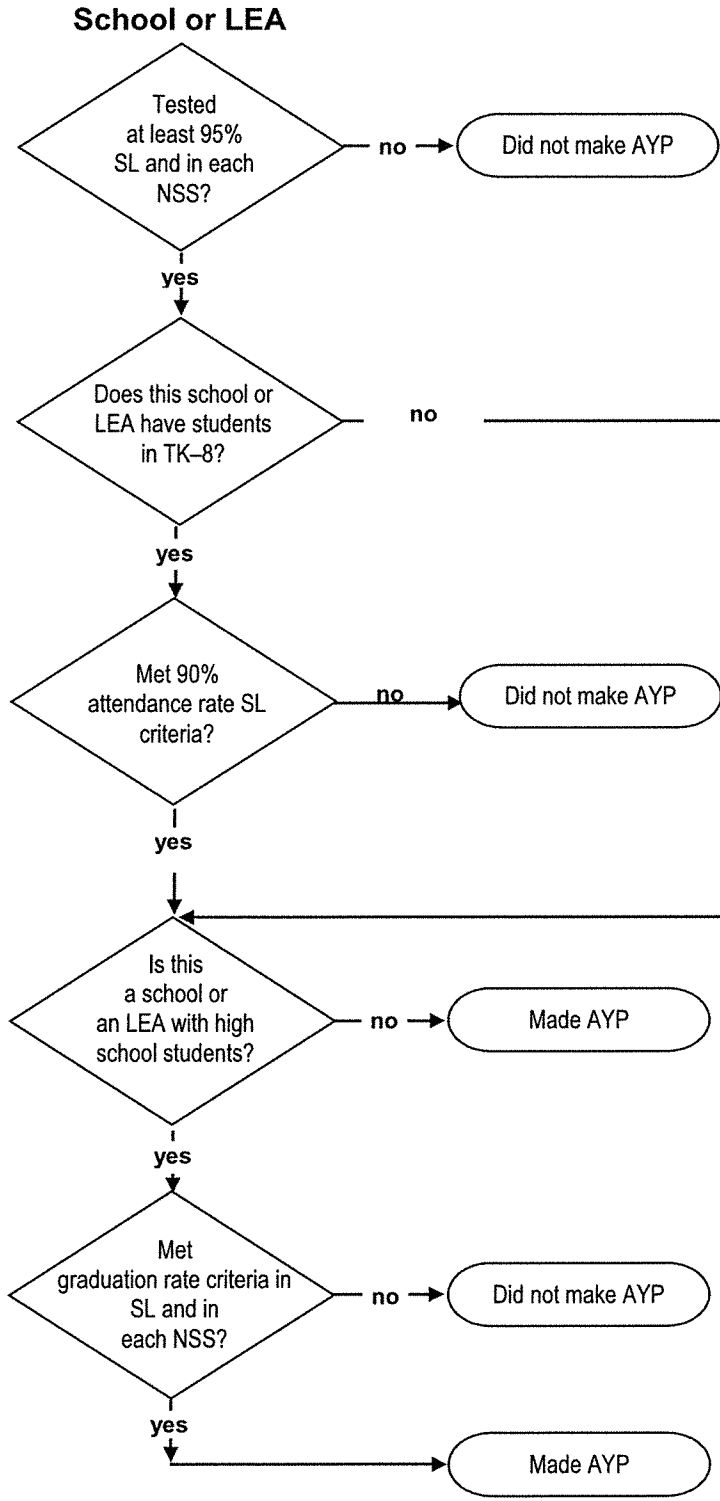
Requirements 1 and 3 apply at the school, LEA, and student group levels. Requirement 2 applies only at the school and LEA levels.

If a school, an LEA, or a student group misses any one criterion of AYP, the school or LEA does not make AYP and could be identified for PI. Potentially, a school or an LEA may have up to 26 different criteria to meet in order to make AYP.

Requirements may be applied using **standard criteria** or **small school/LEA/student group criteria**. Standard criteria were established for schools, LEAs, or student groups with sufficient numbers of test results or data. Small school/LEA/student group criteria using alternative methods and/or special conditions are for schools, LEAs, or student groups with small numbers of test results or data. Criteria details are provided in the “AYP Criteria Details” section on pages 25 through 51.

2015 AYP Criteria Flowchart

This chart illustrates the process of determining whether a school or an LEA makes AYP.



- AYP** = Adequate Yearly Progress
- ELA** = English-language arts/literacy
- LEA** = Local educational agency (school district, COE, or statewide benefit charter)
- NSS** = Numerically significant student group
- SL** = Schoolwide or LEA-wide
- TK-8** = Transitional kindergarten through grade eight

School Type for AYP Purposes

School type designations of elementary, middle, and high are determined using multiple criteria. LEA type is determined from the California Public School Directory database and grade spans.

■ How School Type is Determined

This section describes the basic steps the CDE used in determining school type for 2015 AYP.

Step 1: Grade span is used to assign school type.

In the California Public School Directory database, the CDE lists a school's grade span according to the lowest and highest grade in which student enrollment was reported in the most recent certified CALPADS data collection. For most schools assigned a grade span, the AYP school type can be determined according to the following table:

**Grade Span Criteria
for AYP School Type Classification**

School Type Assigned for AYP	Grade Span Served
Elementary	K-K, K-1, K-2, K-3, K-4, K-5, K-6, K-7, K-8 1-1, 1-2, 1-3, 1-4, 1-5, 1-6, 1-7, 1-8 2-2, 2-3, 2-4, 2-5, 2-6, 2-7, 2-8 3-3, 3-4, 3-5, 3-6, 3-7, 3-8 4-4, 4-5, 4-6, 4-7 5-5, 5-6 6-6
Middle	4-8 5-7, 5-8 6-7, 6-8, 6-9 7-7, 7-8, 7-9, 7-10 8-8, 8-9, 8-10
High	7-11, 7-12 8-11, 8-12 9-9, 9-10, 9-11, 9-12 10-10, 10-11, 10-12 11-11, 11-12 12-12

Step 2: Enrollment is used to assign school type.

Some schools have grade spans that are much broader than those listed in Step 1. For example, a kindergarten through grade twelve school serves elementary, middle, and high school students.

School Type Determined by Enrollment

School Type Assigned for AYP	Grade Span Served
Determined by Enrollment	K-9, K-10, K-11, K-12 1-9, 1-10, 1-11, 1-12 2-9, 2-10, 2-11, 2-12 3-9, 3-10, 3-11, 3-12 4-9, 4-10, 4-11, 4-12 5-9, 5-10, 5-11, 5-12 6-10, 6-11, 6-12

In these cases, school type is determined according to the school's enrollment pattern. School type based on enrollment is determined according to "core" grade spans:

Core Grade Spans for Determining AYP School Type

School Type	Core Grade Span Served
Elementary	K-5
Middle	7-8
High	9-12

Note: Grade six is left out of the core grade span designations. Because some schools view grade six as "elementary" while others view it as "middle," the process remains neutral on whether grade six is considered one or the other.

Schools with a grade span that crosses three core spans (e.g., kindergarten through grade twelve or grades three through eleven) are assigned a school type according to the largest enrollment in a core grade span. For example, a school with grades kindergarten through twelve has enrollment of 106 students in the kindergarten through grade five span; 192 students in the seven and eight span; and 52 students in the nine through twelve span. Since the enrollment in grades seven and eight is the largest of the three core grade spans, the school is assigned a "middle" school type. If the enrollment for two core grade spans is equal, the school type is equal to the previous year's AYP school type.

Step 3: School name or characteristics is used to assign school type.

In a very small number of cases, a school may not have a current grade span or enrollment on file at the CDE. In these situations, the school type may be assigned based on the name or characteristics of the school. Absent the pertinent indicators used to determine a school's type, a school type of "elementary" will be assigned

for AYP purposes. If the school is new and has no test results for the year of the AYP, the school does not receive an AYP Report.

AYP Criteria Summary

The following two tables summarize the AYP criteria that schools and LEAs are responsible for meeting for 2015. The first table displays the standard criteria for most schools, and the second table displays the criteria for a small school, an LEA, or a student group.

2015 AYP Targets, Standard Criteria

These criteria apply to schools, LEAs, and numerically significant student groups that have 100 or more students enrolled during the testing window. Student groups are excluded from Requirement 2. Attendance rate criteria apply to schools and LEAs with 30 or more enrolled students. Graduation rate criteria apply to schools, LEAs, or student groups with grade twelve data and with 50 or more students in the graduation rate denominator (graduates plus non-graduates) of the current and prior year calculation.

Type of School or LEA	Requirement 1: Participation Rate (Applies to schools, LEAs, and numerically significant student groups)	Requirement 2: Attendance Rate as an Additional Indicator (Applies only to schools and LEAs with TK through grade eight)	Requirement 3: Graduation Rate as an Additional Indicator (Applies only to schools, LEAs, and student groups with grade twelve enrollment or at least one graduate in the cohort)
<ul style="list-style-type: none"> Elementary Schools Middle Schools Elementary School Districts 	ELA: 95% Math: 95% (rounded to nearest whole number using standard rounding rules)	90% (rounded to nearest whole number using standard rounding rules)	N/A
<ul style="list-style-type: none"> High Schools High School Districts (These schools and school districts serve students in any grades 9–12.)	ELA: 95% Math: 95% (rounded to nearest whole number using standard rounding rules)	(Not Applicable)	Meet at least one: <ul style="list-style-type: none"> 90.00%, Fixed growth target rate, Variable growth target rate, 5-year graduation rate criteria, or 6-year graduation rate criteria
<ul style="list-style-type: none"> Unified School Districts High Schools and High School Districts COEs (These schools and school districts serve students in grades TK–8 and 9–12.)	ELA: 95% Math: 95% (rounded to nearest whole number using standard rounding rules)	90% (rounded to nearest whole number using standard rounding rules)	Meet at least one: <ul style="list-style-type: none"> 90.00%, Fixed growth target rate, Variable growth target rate, 5-year graduation rate criteria, or 6-year graduation rate criteria

Note: Not all schools contain grades or results for each AYP requirement, and alternative methods and/or special conditions are applied in some cases to ensure that all schools and LEAs receive an AYP Report. These methods and codes are described in the "Alternative Methods and Special Conditions" section on pages 46 through 49.

2015 AYP Targets, Small School/LEA/Student Group Criteria

These criteria apply to schools, LEAs, and numerically significant student groups with fewer than 100 students enrolled during the testing window. Student groups are excluded from Requirement 2. Attendance rate criteria apply to schools and LEAs with 30 or more enrolled students. Graduation rate criteria apply to schools, LEAs, or student groups with grade twelve data and with 50 or more students in the graduation rate denominator (graduates plus non-graduates) of the current and prior year calculation.

Size of School, LEA, or Student Group	Requirement 1: Participation Rate (Applies to schools, LEAs, and student groups)	Requirement 2: Attendance Rate as an Additional Indicator (Applies only to schools and LEAs with TK through grade eight)	Requirement 3: Graduation Rate as an Additional Indicator (Applies only to schools, LEAs, and student groups with grade twelve enrollment or at least one graduate in the cohort)
51–99 students	ELA: 95% Math: 95% (rounded up to nearest whole number)	90% (rounded to the nearest whole number using standard rounding rules)	Meet at least one: <ul style="list-style-type: none"> • 90.00%, • Fixed growth target rate, • Variable growth target rate, • 5-year graduation rate criteria, or • 6-year graduation rate criteria
50 students	Must test at least 47 students	90% (rounded to the nearest whole number using standard rounding rules)	Meet at least one: <ul style="list-style-type: none"> • 90.00%, • Fixed growth target rate, • Variable growth target rate, • 5-year graduation rate criteria, or • 6-year graduation rate criteria
30 – 49 students	N/A	90% (rounded to the nearest whole number using standard rounding rules)	N/A
29 students or less	N/A	N/A	N/A

Note: Not all schools contain grades or results for each AYP requirement, and alternative methods and/or special conditions are applied in some cases to ensure that all schools and LEAs receive an AYP Report. These methods and codes are described in the “Alternative Methods and Special Conditions” section on pages 46 through 49.



2015 Accountability Progress Reporting (APR) County List of Schools Report

County: Glenn
CD Code: 11-00000-0000000

Date: 12/4/2015

2015 APR Supplemental Information:

--Select a Report-- ▼

LEAs and Schools

LEAs and Schools	CDS Code	School Type	Met All Components	Met English-Language Arts/Literacy	Met Mathematics	Met Attendance Rate	Met Graduation Rate
Glenn County Office of Education	11-10116-0000000	1	No	No	No	Yes	N/A
Walden Academy	11-10116-0124909	E	Yes	Yes	Yes	Yes	N/A
Conservation Corps of Long Beach Gateway Cities Ch	11-10116-0130807	H	No	No	No	N/A	N/A
Glenn County Juvenile Court	11-10116-1130087	H	Yes	Yes	Yes	N/A	N/A
Glenn County Special Education	11-10116-6077184	H	Yes	Yes	Yes	N/A	N/A
Success One!	11-10116-0130724	H	Yes	Yes	Yes	N/A	N/A
William Finch	11-10116-1130103	H	Yes	Yes	Yes	N/A	N/A
Capay Joint Union Elementary	11-62554-0000000	2	Yes	Yes	Yes	Yes	N/A
Capay Joint Union Elementary	11-62554-6007439	E	Yes	Yes	Yes	Yes	N/A
Lake Elementary	11-62596-0000000	2	Yes	Yes	Yes	Yes	N/A
Lake Elementary	11-62596-6007454	E	Yes	Yes	Yes	Yes	N/A
Plaza Elementary	11-62638-0000000	2	Yes	Yes	Yes	Yes	N/A
Plaza Elementary	11-62638-6007504	E	Yes	Yes	Yes	Yes	N/A
Princeton Joint Unified	11-62646-0000000	1	Yes	Yes	Yes	Yes	N/A
Princeton Elementary	11-62646-6089262	E	Yes	Yes	Yes	Yes	N/A
Princeton Junior-Senior High	11-62646-1136209	H	Yes	Yes	Yes	Yes	N/A
Stony Creek Joint Unified	11-62653-0000000	1	Yes	Yes	Yes	Yes	N/A
Elk Creek Elementary	11-62653-6007546	E	Yes	Yes	Yes	Yes	N/A
Indian Valley Elementary	11-62653-6007553	E	Yes	Yes	Yes	N/A	N/A
Bidwell Point High (Continuation)	11-62653-1130046	H	Yes	Yes	Yes	N/A	N/A
Elk Creek Junior-Senior High	11-62653-1132109	H	Yes	Yes	Yes	N/A	N/A
Willows Unified	11-62661-0000000	1	Yes	Yes	Yes	Yes	Yes
Murdock Elementary	11-62661-6007603	E	Yes	Yes	Yes	Yes	N/A
Willows Intermediate	11-62661-6007611	M	Yes	Yes	Yes	Yes	N/A
Willows Community High	11-62661-1130038	H	Yes	Yes	Yes	N/A	N/A
Willows High	11-62661-1132851	H	No	No	Yes	N/A	Yes
Orland Joint Unified	11-75481-0000000	1	Yes	Yes	Yes	Yes	Yes
Fairview Elementary	11-75481-6007470	E	Yes	Yes	Yes	Yes	N/A
Mill Street Elementary	11-75481-6007488	E	Yes	Yes	Yes	Yes	N/A
Price Intermediate	11-75481-6007496	M	Yes	Yes	Yes	Yes	N/A
North Valley High (Continuation)	11-75481-1130012	H	Yes	Yes	Yes	N/A	N/A
Orland Community Day	11-75481-1130145	H	Yes	Yes	Yes	N/A	N/A
Orland High	11-75481-1135656	H	Yes	Yes	Yes	N/A	Yes

<u>Hamilton Unified</u>	11-76562-0000000	1	Yes	Yes	Yes	Yes	Yes
<u>Hamilton Elementary</u>	11-76562-6007447	E	Yes	Yes	Yes	Yes	N/A
<u>Ella Barkley High</u>	11-76562-1130053	H	Yes	Yes	Yes	N/A	N/A
<u>Hamilton High</u>	11-76562-1133701	H	Yes	Yes	Yes	N/A	Yes

An "N/A" in the "Met Graduation Rate" or the "Met Attendance Rate" column means that the school or LEA was not required to meet the graduation rate or the attendance rate criteria.

Type Explanations:

1 = Unified District, 2 = Elementary District, 3 = 9-12 High District, 4 = 7-12 High District, E = Elementary, M = Middle School, H = High School

Web Policy



2015 Accountability Progress Reporting (APR)

Local Educational Agency (LEA) Report

2015 AYP and PI Links:

LEA: Willows Unified
County: Glenn
CDS Code: 11-62661-0000000

Type: Unified District

Date: 12/4/2015

Cohort Graduation Report
LEA PI Status and Grade Span
LEA List of schools
County List of Schools
FAQ

(An LEA is a school district, county office of education, or statewide benefit charter.)

2015 APR
FAQ
Glossary

2015 Federal AYP and PI
AYP
PI
Guide

AYP Determination:

PI Status: In PI

Made AYP: Yes

Met 12 of 12 AYP Criteria

Participation Rate: Targets and Criteria Met

For details on how the participation rate was calculated, please see the [2015 AYP Participation Rate Web page](#).

Content Area	Target	Criteria met
English Language Arts/Literacy (ELA)	95%	Yes
Mathematics	95%	Yes

Participation Rate: LEA-wide and Student Groups

Student Groups	ELA Enrollment	ELA Number of Students Tested	ELA Rate	ELA Met 2015 Criteria	ELA Alternative Method	Math Enrollment	Math Number of Students Tested	Math Rate	Math Met 2015 Criteria	Math Alternative Method
LEA-wide	761	729	96	Yes	--	761	734	96	Yes	--

Black or African American	12	11	92	--	--	12	11	92	--	--
American Indian or Alaska Native	23	22	96	--	--	23	22	96	--	--
Asian	41	41	100	--	--	41	41	100	--	--
Filipino	3	3	100	--	--	3	3	100	--	--
Hispanic or Latino	394	380	96	Yes	--	394	385	98	Yes	--
Native Hawaiian or Pacific Islander	3	3	100	--	--	3	3	100	--	--
White	276	261	95	Yes	--	276	260	94	Yes	<u>Y2</u>
Two or More Races	8	7	88	--	--	8	8	100	--	--
Socioeconomically Disadvantaged	571	547	96	Yes	--	571	551	96	Yes	--
English Learners	262	254	97	Yes	--	262	257	98	Yes	--
Students with Disabilities	85	80	95	--	--	85	80	95	--	--

Attendance Rate Target: 90 Percent

<u>Average Daily Attendance</u>	<u>School Attendance Enrollment</u>	<u>Met Criteria</u>
96%	--	Yes

Attendance Rate Criteria: Schools that met the following criteria were required to meet the attendance rate indicator:

1. The school's entire enrollment was 100 or more on Fall Census Day in October 2014, and the Enrollment in Transitional Kindergarten through grade eight (TK-8) was 30 or more.
2. The school's entire enrollment was between 30 to 99 on Fall Census Day in October 2014, and the enrollment in TK-8 was 30 or more, or the percent of TK-8 enrollment made up 50% or more of the school's enrollment.

LEAs that met the following criteria were required to meet the attendance rate indicator:

1. The LEAs entire TK-8 enrollment was 30 or more on Fall Census Day in October 2014.

LEAs and direct-funded charter schools were given two options for submitting their attendance data to the California Department of Education:

1. Total number of days students attended and were enrolled.

or

2. Average Daily Attendance (ADA)

The data are as of the second period (P-2), which is from July 1 through the last school month that ends before April 15, 2015. LEAs and direct-funded charter schools submitted data for one option only. The attendance rate will be displayed in the column that reflects the option chosen by the LEA or direct-funded charter school.

"--" means the school submitted attendance data under the other option (i.e., ADA or School Attendance Enrollment).

"DNS" (Did Not Submit) in the ADA and School Attendance Enrollment columns mean an attendance rate could not be calculated because the LEA or direct-funded charter school did not submit data under either option.

"N/A" means not applicable.

Graduation Rate Goal: 90 Percent

<u>Met Schoolwide Graduation</u>	<u>Met Student Group Graduation Rates</u>	<u>Met Overall Graduation Rate Criteria</u>
Yes	Yes	Yes

Current Year: Graduation Rate Results

	<u>2014 Cohort</u>	<u>2015 Cohort</u>				

Groups	<u>Graduation Rate (class of 2012-13)</u>	<u>Graduation Rate (class of 2013-14)</u>	<u>2015 Target Graduation Rate</u>	<u>2015 Graduation Rate Criteria Met</u>	<u>2016 Target Graduation Rate Class of 2014-15)</u>	<u>Exclusion/ Alternative Method</u>
LEA-wide	82.68	84.68	84.14	Yes	86.01	--
Black or African American	--	--	N/A	N/A	N/A	<u>U50</u>
American Indian or Alaska Native	--	--	N/A	N/A	N/A	<u>U50</u>
Asian	--	--	N/A	N/A	N/A	<u>U50</u>
Filipino	--	--	N/A	N/A	N/A	<u>U50</u>
Hispanic or Latino	88.68	81.82	74.05	Yes	78.04	--
Native Hawaiian or Pacific Islander	--	--	N/A	N/A	N/A	<u>U50</u>
White	79.69	89.29	81.75	Yes	87.97	--
Two or More Races	--	--	N/A	N/A	N/A	<u>U50</u>
Socioeconomically Disadvantaged	76.62	78.05	79.30	Yes	81.04	<u>5Y</u>
English Learners	--	--	N/A	N/A	N/A	<u>U50</u>
Students with Disabilities	--	--	N/A	N/A	N/A	<u>U50</u>

Graduation Rate Criteria: (1) met or exceeded the goal of 90%, or (2) met the fixed target graduation rate, or (3) met the variable target graduation rate. Fixed and variable target graduation rates are calculated for local educational agencies and schools until 2019 when the target for all LEAs, schools, and the State is 90%.

Percent Proficient - Annual Measurable Objectives (AMOs)

Percent Proficient Statement: Due to the transition to the Smarter Balanced Summative Assessments, the U.S. Department of Education (ED) approved the California Department of Education's waiver request to exclude the percent proficient results from AYP determinations. However, the ED is requiring the percent proficient results be displayed on the AYP reports. For a more thorough view of a school's or district's progress, please view: [Local Control Funding Formula State Priorities Snapshot](#)

Percent Proficient Targets

	Target
English Language Arts/Literacy (ELA)	100.0%
Mathematics	100.0%

Percent Proficient: LEA-wide and Student Groups

Student Groups	<u>ELA Valid Scores</u>	<u>ELA Number At or Above Proficient</u>	<u>ELA Percent At or Above Proficient</u>	<u>ELA Alternative Method</u>	<u>Math Valid Scores</u>	<u>Math Number At or Above Proficient</u>	<u>Math Percent At or Above Proficient</u>	<u>Math Alternative Method</u>
LEA-wide	691	157	22.7	--	694	88	12.7	--
Black or African American	8	--	--	--	8	--	--	--
American Indian or Alaska Native	17	3	17.6	--	17	3	17.6	--
Asian	41	9	22.0	--	41	4	9.8	--
Filipino	3	--	--	--	3	--	--	--
Hispanic or Latino	364	62	17.0	--	367	33	9.0	--
Native Hawaiian or Pacific Islander	3	--	--	--	3	--	--	--
White	249	78	31.3	--	248	46	18.5	--

Two or More Races	5	--	--	--	6	--	--	--
Socioeconomically Disadvantaged	512	91	17.8	--	514	42	8.2	--
English Learners	245	31	12.7	--	247	15	6.1	--
Students with Disabilities	64	2	3.1	--	64	4	6.2	--

Web Policy



2015 Accountability Progress Reporting (APR)

Local Educational Agency (LEA) PI Status

LEA: Willows Unified
County: Glenn
CDS Code: 11-62661-0000000

Type: Unified District

Date: 12/4/2015

2015 AYP and PI Links:

Cohort Graduation Report
LEA PI Status and Grade Span
LEA List of schools
County List of Schools
FAQ

(An LEA is a school district, county office of education, or statewide benefit charter.)

2015 APR

FAQ

Glossary

2015 Federal AYP and PI

AYP

PI

Guide

2015-16 PI Status: In PI

2015-16 PI Placement: Year 3

Prior PI Placement: Year 3

First Year of PI Implementation: 2009-2010

PI Exit Year:

Special Conditions:

Met Adequate Yearly Progress (AYP) Criteria

Year	English-Language Arts/Literacy	Mathematics	Attendance Criteria	Graduation Rate
2013	No	No	N/A	Yes
2014	N/A	N/A	N/A	N/A
2015	Yes	Yes	Yes	Yes



2015 Accountability Progress Reporting (APR)

Local Educational Agency (LEA) List of Schools

LEA: Willows Unified
 County: Glenn
 CDS Code: 11-62661-0000000

Type: Unified District

Date: 12/4/2015

2015 APR Supplemental Information:

--Select a Report--

Elementary Schools

Elementary Schools	CDS Code	<u>Met All Components</u>	<u>Met English-Language Arts/Literacy</u>	<u>Met Mathematics</u>	<u>Met Attendance Rate</u>	<u>Met Graduation Rate</u>	<u>PI Status</u>
<u>Murdock Elementary</u>	11-62661-6007603	Yes	Yes	Yes	Yes	N/A	Year 5

Middle Schools

Middle Schools	CDS Code	<u>Met All Components</u>	<u>Met English-Language Arts/Literacy</u>	<u>Met Mathematics</u>	<u>Met Attendance Rate</u>	<u>Met Graduation Rate</u>	<u>PI Status</u>
<u>Willows Intermediate</u>	11-62661-6007611	Yes	Yes	Yes	Yes	N/A	Year 5

High Schools

High Schools	CDS Code	<u>Met All Components</u>	<u>Met English-Language Arts/Literacy</u>	<u>Met Mathematics</u>	<u>Met Attendance Rate</u>	<u>Met Graduation Rate</u>	<u>PI Status</u>
<u>Willows Community High</u>	11-62661-1130038	Yes	Yes	Yes	N/A	N/A	Not Title 1
<u>Willows High</u>	11-62661-1132851	No	No	Yes	N/A	Yes	Year 5

An "N/A" in the "Met Graduation Rate" or the "Met Attendance Rate" column means that the school or LEA was not required to meet the graduation rate or the attendance rate criteria.

Web Policy

2013 Met Grade Span Criteria

Year	<u>Grade Span Reports</u>	English Language Arts/Literacy	Mathematics
2013	Elementary	No	No
2013	Middle	No	No
2013	High	No	No

2015 Met Grade Span Criteria

Year	Grade Span Reports	English Language Arts/Literacy	Mathematics
2015	Elementary	Yes	Yes
2015	Middle	Yes	Yes
2015	High	No	Yes

Web Policy



2015 Accountability Progress Reporting (APR)

2015 AYP School Report

School: Murdock Elementary
 LEA: Willows Unified
 County: Glenn
 CDS Code: 11-62661-6007603
 School Type: Elementary School

Charter School: No

Date: 12/4/2015

2015 APR Reports and Supplemental Information:

--Select a Report--

AYP Determination:

PI Status: In PI

Made AYP: Yes

Met: 11 of 11 AYP Criteria

Participation Rate: Targets and Met Criteria

For details on how the participation rate was calculated, please see the [2015 AYP Participation Rate Web page](#).

Content Area	Target	Met
English Language Arts/Literacy (ELA)	95%	Yes
Mathematics	95%	Yes

Participation Rate: LEA-wide and Student Groups

Student Groups	ELA Enrollment	ELA Number of Students Tested	ELA Rate	ELA Met 2015 Criteria	ELA Alternative Method	Math Enrollment	Math Number of Students Tested	Math Rate	Math Met 2015 Criteria	Math Alternative Method
Schoolwide	323	316	98	Yes	--	323	316	98	Yes	
Black or African American	3	3	100	--	--	3	3	100	--	
American Indian or Alaska Native	8	8	100	--	--	8	8	100	--	
Asian	19	19	100	--	--	19	19	100	--	
Filipino	2	2	100	--	--	2	2	100	--	
Hispanic or Latino	179	173	97	Yes	--	179	175	98	Yes	
Native Hawaiian or Pacific Islander	1	1	100	--	--	1	1	100	--	
White	105	104	99	Yes	--	105	102	97	Yes	
Two or More Races	5	5	100	--	--	5	5	100	--	
Socioeconomically Disadvantaged	268	262	98	Yes	--	268	262	98	Yes	
English Learners	142	139	98	Yes	--	142	140	99	Yes	

Students with Disabilities	34	33	98	--	--	34	33	98	--
----------------------------	----	----	----	----	----	----	----	----	----

Attendance Rate Target: 90 Percent

<u>Average Daily Attendance</u>	<u>School Attendance Enrollment</u>	<u>Met Criteria</u>
95%	--	Yes

Attendance Rate Criteria: Schools that met the following criteria were required to meet the attendance rate indicator:

1. The school's entire enrollment was 100 or more on Fall Census Day in October 2014, and the Enrollment in Transitional Kindergarten through grade eight (TK-8) was 30 or more.
2. The school's entire enrollment was between 30 to 99 on Fall Census Day in October 2014, and the enrollment in TK-8 was 30 or more, or the percent of TK-8 enrollment made up 50% or more of the school's enrollment.

LEAs that met the following criteria were required to meet the attendance rate indicator:

1. The LEAs entire TK-8 enrollment was 30 or more on Fall Census Day in October 2014.

LEAs and direct-funded charter schools were given two options for submitting their attendance data to the California Department of Education:

1. Total number of days students attended and were enrolled.

or

2. Average Daily Attendance (ADA)

The data are as of the second period (P-2), which is from July 1 through the last school month that ends before April 15, 2015. LEAs and direct-funded charter schools submitted data for one option only. The attendance rate will be displayed in the column that reflects the option chosen by the LEA or direct-funded charter school.

"--" means the school submitted attendance data under the other option (i.e., ADA or School Attendance Enrollment).

"DNS" (Did Not Submit) in the ADA and School Attendance Enrollment columns mean an attendance rate could not be calculated because the LEA or direct-funded charter school did not submit data under either option.

"N/A" means not applicable.

Graduation Rate Goal: 90 Percent**Current Year: Graduation Rate Results**

Graduation Rate data not available.

Graduation Rate Criteria: (1) met or exceeded the goal of 90%, or (2) met the fixed target graduation rate, or (3) met the variable target graduation rate. Fixed and variable target graduation rates are calculated for LEAs and schools until 2019 when the target for all LEAs, schools and the state is 90%.

Percent Proficient - Annual Measurable Objectives (AMOs) Percent Proficient Statement: Due to the transition to the Smarter Balanced Summative Assessments, the U.S. Department of Education (ED) approved the California Department of Education's waiver request to exclude the percent proficient results from AYP determinations. However, the ED is requiring the percent proficient results be displayed on the AYP reports. For a more thorough view of a school's or district's progress, please view: [Local Control Funding Formula State Priorities Snapshot](#)

Percent Proficient Rate: Schoolwide and Student Groups

Content Area	Target
English Language Arts/Literacy (ELA)	100.0%
Mathematics	100.0%

Percent Proficient: Schoolwide and Student Groups

<u>Student Groups</u>	<u>ELA Valid Scores</u>	<u>ELA Number At or Above Proficient</u>	<u>ELA Percent At or Above Proficient</u>	<u>Math Valid Scores</u>	<u>Math Number At or Above Proficient</u>	<u>Math Percent At or Above Proficient</u>
Schoolwide	295	70	23.7	295	43	14.6
Black or African American	2	--	--	2	--	--
American Indian or Alaska Native	6	--	--	6	--	--
Asian	19	4	21.1	19	1	5.3
Filipino	2	--	--	2	--	--
Hispanic or Latino	164	29	17.7	166	15	9.0
Native Hawaiian or Pacific Islander	1	--	--	1	--	--
White	97	31	32.0	95	22	23.2
Two or More Races	3	--	--	3	--	--
Socioeconomically Disadvantaged	242	47	19.4	242	23	9.5
English Learners	133	24	18.0	134	10	7.5
Students with Disabilities	25	1	4.0	25	3	12.0

Web Policy



2015 Accountability Progress Reporting (APR)

2015-16 PI School Report

School: Willows Intermediate
LEA: Willows Unified
County: Glenn
CDS Code: 11-62661-6007611
School Type: Middle School

Charter School: No

Date: 12/4/2015

2015 APR Reports and Supplemental Information:

--Select a Report-- ▼

Program Improvement Determinations

2015-16 PI Status: In PI

2015-16 PI Placement: Year 5

First Year of PI Implementation: 2009-2010

Prior PI Placement: Year 5

PI Exit Year:

Special Conditions:

Made 2015 Adequate Yearly Progress (AYP): Yes

Web Policy



2015 Accountability Progress Reporting (APR)

2015 AYP School Report

School: Willows Intermediate
 LEA: Willows Unified
 County: Glenn
 CDS Code: 11-62661-6007611
 School Type: Middle School

Charter School: No

Date: 12/4/2015

2015 APR Reports and Supplemental Information:

--Select a Report--

AYP Determination:

PI Status: In PI

Made AYP: Yes

Met: 11 of 11 AYP Criteria

Participation Rate: Targets and Met Criteria

For details on how the participation rate was calculated, please see the [2015 AYP Participation Rate Web page](#).

Content Area	Target	Met
English Language Arts/Literacy (ELA)	95%	Yes
Mathematics	95%	Yes

Participation Rate: LEA-wide and Student Groups

Student Groups	ELA Enrollment	ELA Number of Students Tested	ELA Rate	ELA Met 2015 Criteria	ELA Alternative Method	Math Enrollment	Math Number of Students Tested	Math Rate	Math Met 2015 Criteria	Math Alternative Method
Schoolwide	338	322	95	Yes	--	338	325	96	Yes	
Black or African American	6	5	84	--	--	6	5	84	--	
American Indian or Alaska Native	12	11	92	--	--	12	11	92	--	
Asian	17	17	100	--	--	17	17	100	--	
Filipino	1	1	100	--	--	1	1	100	--	
Hispanic or Latino	160	157	98	Yes	--	160	157	98	Yes	
Native Hawaiian or Pacific Islander	1	1	100	--	--	1	1	100	--	
White	138	128	93	Yes	Y2	138	130	94	Yes	
Two or More Races	3	2	67	--	--	3	3	100	--	
Socioeconomically Disadvantaged	228	218	96	Yes	--	228	220	96	Yes	
English Learners	99	97	98	Yes	--	99	97	98	Yes	

Students with Disabilities	42	40	96	--	--	42	40	96	--
----------------------------	----	----	----	----	----	----	----	----	----

Attendance Rate Target: 90 Percent

<u>Average Daily Attendance</u>	<u>School Attendance Enrollment</u>	<u>Met Criteria</u>
96%	--	Yes

Attendance Rate Criteria: Schools that met the following criteria were required to meet the attendance rate indicator:

1. The school's entire enrollment was 100 or more on Fall Census Day in October 2014, and the Enrollment in Transitional Kindergarten through grade eight (TK-8) was 30 or more.
2. The school's entire enrollment was between 30 to 99 on Fall Census Day in October 2014, and the enrollment in TK-8 was 30 or more, or the percent of TK-8 enrollment made up 50% or more of the school's enrollment.

LEAs that met the following criteria were required to meet the attendance rate indicator:

1. The LEAs entire TK-8 enrollment was 30 or more on Fall Census Day in October 2014.

LEAs and direct-funded charter schools were given two options for submitting their attendance data to the California Department of Education:

1. Total number of days students attended and were enrolled.

or

2. Average Daily Attendance (ADA)

The data are as of the second period (P-2), which is from July 1 through the last school month that ends before April 15, 2015. LEAs and direct-funded charter schools submitted data for one option only. The attendance rate will be displayed in the column that reflects the option chosen by the LEA or direct-funded charter school.

"--" means the school submitted attendance data under the other option (i.e., ADA or School Attendance Enrollment).

"DNS" (Did Not Submit) in the ADA and School Attendance Enrollment columns mean an attendance rate could not be calculated because the LEA or direct-funded charter school did not submit data under either option.

"N/A" means not applicable.

Graduation Rate Goal: 90 Percent**Current Year: Graduation Rate Results**

Graduation Rate data not available.

Graduation Rate Criteria: (1) met or exceeded the goal of 90%, or (2) met the fixed target graduation rate, or (3) met the variable target graduation rate. Fixed and variable target graduation rates are calculated for LEAs and schools until 2019 when the target for all LEAs, schools and the state is 90%.

Percent Proficient - Annual Measurable Objectives (AMOs) Percent Proficient Statement: Due to the transition to the Smarter Balanced Summative Assessments, the U.S. Department of Education (ED) approved the California Department of Education's waiver request to exclude the percent proficient results from AYP determinations. However, the ED is requiring the percent proficient results be displayed on the AYP reports. For a more thorough view of a school's or district's progress, please view: [Local Control Funding Formula State Priorities Snapshot](#)

Percent Proficient Rate: Schoolwide and Student Groups

Content Area	Target
English Language Arts/Literacy (ELA)	100.0%
Mathematics	100.0%

Percent Proficient: Schoolwide and Student Groups

<u>Student Groups</u>	<u>ELA Valid Scores</u>	<u>ELA Number At or Above Proficient</u>	<u>ELA Percent At or Above Proficient</u>	<u>Math Valid Scores</u>	<u>Math Number At or Above Proficient</u>	<u>Math Percent At or Above Proficient</u>
Schoolwide	307	49	16.0	310	37	11.9
Black or African American	3	--	--	3	--	--
American Indian or Alaska Native	8	--	--	8	--	--
Asian	17	2	11.8	17	2	11.8
Filipino	1	--	--	1	--	--
Hispanic or Latino	152	15	9.9	152	16	10.5
Native Hawaiian or Pacific Islander	1	--	--	1	--	--
White	123	31	25.2	125	19	15.2
Two or More Races	2	--	--	3	--	--
Socioeconomically Disadvantaged	205	19	9.3	207	16	7.7
English Learners	94	5	5.3	94	5	5.3
Students with Disabilities	32	0	0.0	32	0	0.0

Web Policy



California Department of Education
Analysis, Measurement, and Accountability Reporting Division
Academic Accountability Unit

2015 Accountability Progress Reporting (APR)

2015-16 PI School Report

School: Murdock Elementary
LEA: Willows Unified
County: Glenn
CDS Code: 11-62661-6007603
School Type: Elementary School

Charter School: No

Date: 12/4/2015

2015 APR Reports and Supplemental Information:

--Select a Report-- ▼

Program Improvement Determinations

2015-16 PI Status: In PI

2015-16 PI Placement: Year 5

First Year of PI Implementation: 2009-2010

Prior PI Placement: Year 5

PI Exit Year:

Special Conditions:

Made 2015 Adequate Yearly Progress (AYP): Yes

[Web Policy](#)



2015 Accountability Progress Reporting (APR)

2015 AYP School Report

School: Willows High
LEA: Willows Unified
County: Glenn
CDS Code: 11-62661-1132851
School Type: High School

Charter School: No

Date: 12/4/2015

2015 APR Reports and Supplemental Information:

--Select a Report-- ▼

AYP Determination:

PI Status: In PI
Made AYP: No
Met: 2 of 3 AYP Criteria

Participation Rate: Targets and Met Criteria

For details on how the participation rate was calculated, please see the [2015 AYP Participation Rate Web page](#).

Content Area	Target	Met
English Language Arts/Literacy (ELA)	95%	No
Mathematics	95%	Yes

Participation Rate: LEA-wide and Student Groups

Student Groups	ELA Enrollment	ELA Number of Students Tested	ELA Rate	ELA Met 2015 Criteria	ELA Alternative Method	Math Enrollment	Math Number of Students Tested	Math Rate	Math Met 2015 Criteria	Math Alternative Method
Schoolwide	88	81	93	No	--	88	83	95	Yes	
Black or African American	3	3	100	--	--	3	3	100	--	
American Indian or Alaska Native	3	3	100	--	--	3	3	100	--	
Asian	4	4	100	--	--	4	4	100	--	
Filipino	0	0	--	--	--	0	0	--	--	
Hispanic or Latino	45	42	94	--	--	45	45	100	--	
Native Hawaiian or Pacific Islander	1	1	100	--	--	1	1	100	--	
White	32	28	88	--	--	32	27	85	--	
Two or More Races	0	0	--	--	--	0	0	--	--	
Socioeconomically Disadvantaged	64	58	91	--	--	64	60	94	--	
English Learners	14	12	86	--	--	14	14	100	--	

Students with Disabilities	8	6	75	--	--	8	6	75	--
----------------------------	---	---	----	----	----	---	---	----	----

Attendance Rate Target: 90 Percent

<u>Average Daily Attendance</u>	<u>School Attendance Enrollment</u>	<u>Met Criteria</u>
N/A	N/A	N/A

Attendance Rate Criteria: Schools that met the following criteria were required to meet the attendance rate indicator:

1. The school's entire enrollment was 100 or more on Fall Census Day in October 2014, and the Enrollment in Transitional Kindergarten through grade eight (TK-8) was 30 or more.
2. The school's entire enrollment was between 30 to 99 on Fall Census Day in October 2014, and the enrollment in TK-8 was 30 or more, or the percent of TK-8 enrollment made up 50% or more of the school's enrollment.

LEAs that met the following criteria were required to meet the attendance rate indicator:

1. The LEAs entire TK-8 enrollment was 30 or more on Fall Census Day in October 2014.

LEAs and direct-funded charter schools were given two options for submitting their attendance data to the California Department of Education:

1. Total number of days students attended and were enrolled.

or

2. Average Daily Attendance (ADA)

The data are as of the second period (P-2), which is from July 1 through the last school month that ends before April 15, 2015. LEAs and direct-funded charter schools submitted data for one option only. The attendance rate will be displayed in the column that reflects the option chosen by the LEA or direct-funded charter school.

"--" means the school submitted attendance data under the other option (i.e., ADA or School Attendance Enrollment).

"DNS" (Did Not Submit) in the ADA and School Attendance Enrollment columns mean an attendance rate could not be calculated because the LEA or direct-funded charter school did not submit data under either option.

"N/A" means not applicable.

Graduation Rate Goal: 90 Percent

<u>Met Schoolwide Graduation</u>	<u>Met Student Group Graduation Rates</u>	<u>Met Overall Graduation Rate Criteria</u>
Yes	Yes	Yes

Current Year: Graduation Rate Results

<u>Groups</u>	<u>2014 Cohort Graduation Rate (class of 2012-13)</u>	<u>2015 Cohort Graduation Rate (class of 2013-14)</u>	<u>2015 Target Graduation Rate</u>	<u>2015 Graduation Rate Criteria Met</u>	<u>2016 Target Graduation Rate Class of 2014-15)</u>	<u>Exclusion/ Alternative Method</u>
Schoolwide	86.73	91.74	87.27	Yes	87.95	--
Black or African American	--	--	N/A	N/A	N/A	<u>U50</u>
American Indian or Alaska Native	--	--	N/A	N/A	N/A	<u>U50</u>
Asian	--	--	N/A	N/A	N/A	<u>U50</u>
Filipino	--	--	N/A	N/A	N/A	<u>U50</u>
Hispanic or Latino	--	90.00	N/A	N/A	90.00	<u>PY50</u>
Native Hawaiian or Pacific Islander	--	--	N/A	N/A	N/A	<u>U50</u>

White	--	--	N/A	N/A	N/A	<u>U50</u>
Two or More Races	--	--	N/A	N/A	N/A	<u>U50</u>
Socioeconomically Disadvantaged	82.81	88.41	84.25	Yes	87.93	--
English Learners	--	--	N/A	N/A	N/A	<u>U50</u>
Students with Disabilities	--	--	N/A	N/A	N/A	<u>U50</u>

Graduation Rate Criteria: (1) met or exceeded the goal of 90%, or (2) met the fixed target graduation rate, or (3) met the variable target graduation rate. Fixed and variable target graduation rates are calculated for LEAs and schools until 2019 when the target for all LEAs, schools and the state is 90%.

Percent Proficient - Annual Measurable Objectives (AMOs) Percent Proficient Statement: Due to the transition to the Smarter Balanced Summative Assessments, the U.S. Department of Education (ED) approved the California Department of Education's waiver request to exclude the percent proficient results from AYP determinations. However, the ED is requiring the percent proficient results be displayed on the AYP reports. For a more thorough view of a school's or district's progress, please view: [Local Control Funding Formula State Priorities Snapshot](#)

Percent Proficient Rate: Schoolwide and Student Groups

Content Area	Target
English Language Arts/Literacy (ELA)	100.0%
Mathematics	100.0%

Percent Proficient: Schoolwide and Student Groups

Student Groups	ELA Valid Scores	ELA Number At or Above Proficient	ELA Percent At or Above Proficient	Math Valid Scores	Math Number At or Above Proficient	Math Percent At or Above Proficient
Schoolwide	80	38	47.5	80	8	10.0
Black or African American	3	--	--	3	--	--
American Indian or Alaska Native	3	--	--	3	--	--
Asian	4	--	--	4	--	--
Filipino	0	--	--	0	--	--
Hispanic or Latino	41	18	43.9	42	2	4.8
Native Hawaiian or Pacific Islander	1	--	--	1	--	--
White	28	16	57.1	27	5	18.5
Two or More Races	0	--	--	0	--	--
Socioeconomically Disadvantaged	57	25	43.9	57	3	5.3
English Learners	12	2	16.7	13	0	0.0
Students with Disabilities	6	--	--	6	--	--

Web Policy



2015 Accountability Progress Reporting (APR)

2015-16 PI School Report

School: Willows High
LEA: Willows Unified
County: Glenn
CDS Code: 11-62661-1132851
School Type: High School

Charter School: No

Date: 12/4/2015

2015 APR Reports and Supplemental Information:

--Select a Report-- ▼

Program Improvement Determinations

2015-16 PI Status: In PI

2015-16 PI Placement: Year 5

First Year of PI Implementation: 2011-2012

Prior PI Placement: Year 4

PI Exit Year:

Special Conditions:

Made 2015 Adequate Yearly Progress (AYP): No

Web Policy